

ANAT 2020

**SPOT TEST FORMAT
[with Answers]**

TYPES OF QUESTIONS

- IDENTIFICATION ONLY
- IDENTIFICATION & DIRECT QUESTION
- IDENTIFICATION & INDIRECT QUESTION
- DIRECT AND/OR INDIRECT QUESTION ON SPECIMEN

TYPES OF SPECIMEN

- FULL CADAVER
- DISSECTED WET SPECIMEN
- PLASTINATED SPECIMEN
- BONES
- CROSS SECTIONS OF PLASTINATED SPECIMEN
- MODELS & CHARTS
- RADIOGRAPHS

**A- WHICH STRUCTURE LIES WITHIN THE AREA SHADED BLUE
(Tendon of long head of Biceps)**

**B - NAME THE LIGAMENT THAT HOLDS DOWN STRUCTURE 'A'
WITHIN THE AREA SHADED BLUE (Transverse humeral Ligament)**





A - NAME THE MUSCLE THAT LIES IN THE AREA SHADED BLUE
(Supraspinatus)

B - GIVE THE INNERVATION TO THIS MUSCLE (Suprascapular Nerve)

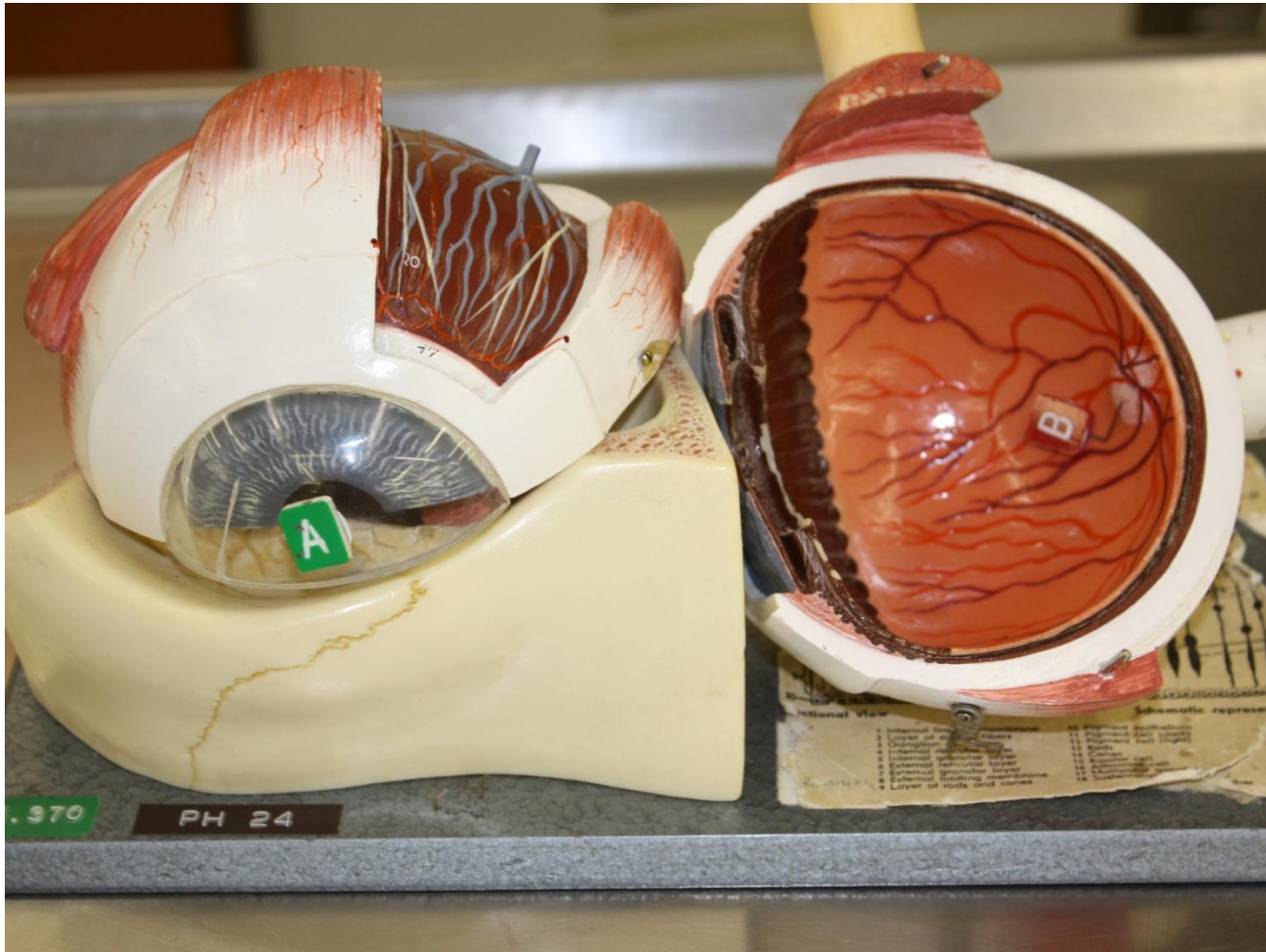
IDENTIFY 'A'

(Oesophagus)

IDENTIFY 'B' (Be
specific)

(Middle trunk of
brachial plexus)





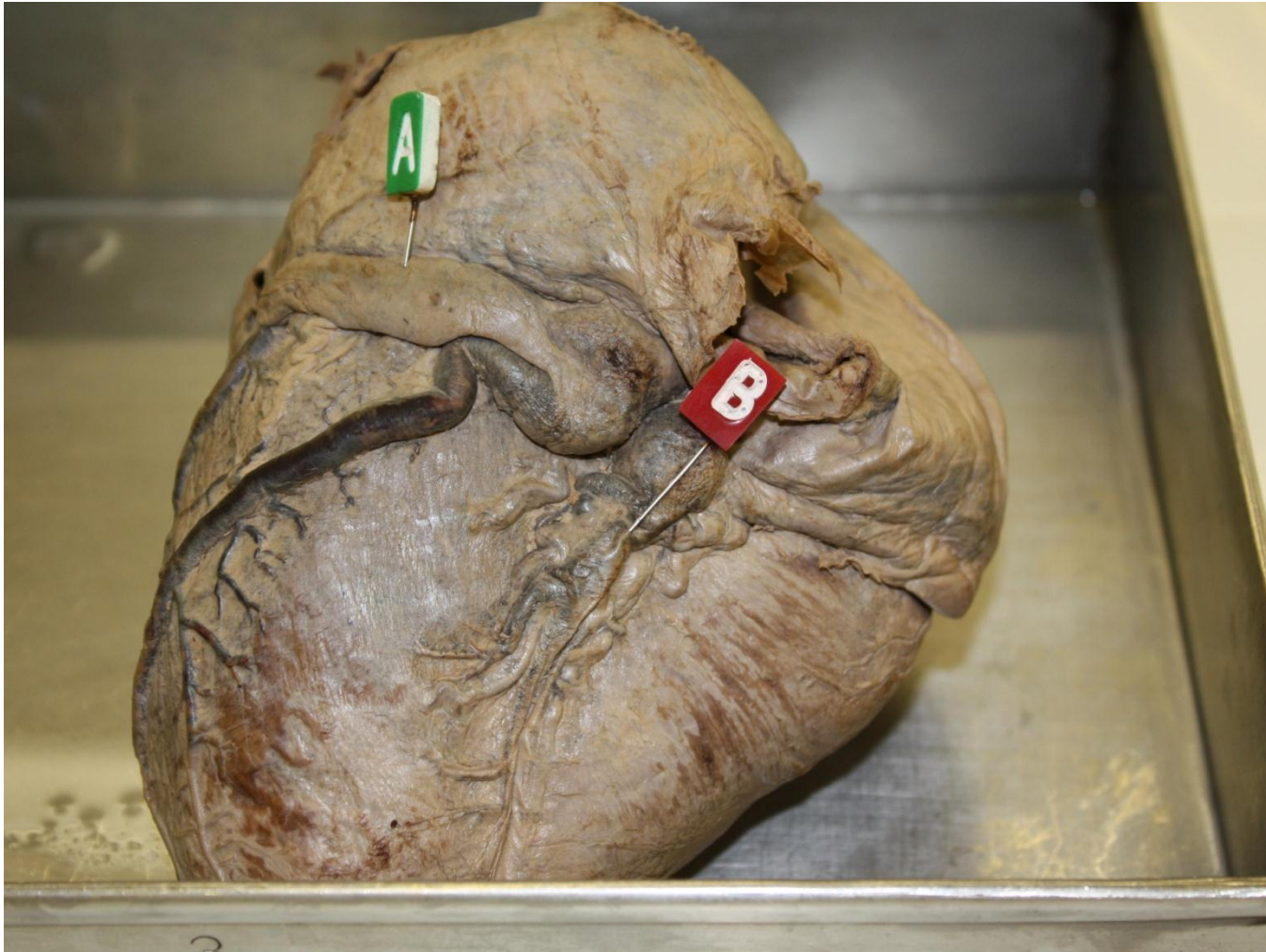
A – IDENTIFY 'A' (Cornea)

B – IDENTIFY 'B' (TIP OF PIN) [Optic disc]



A – IDENTIFY 'A' (Principal/main bronchus)

B – WHAT IS THE SURFACE MARKING FOR 'B' (4th Costochondrial junction)

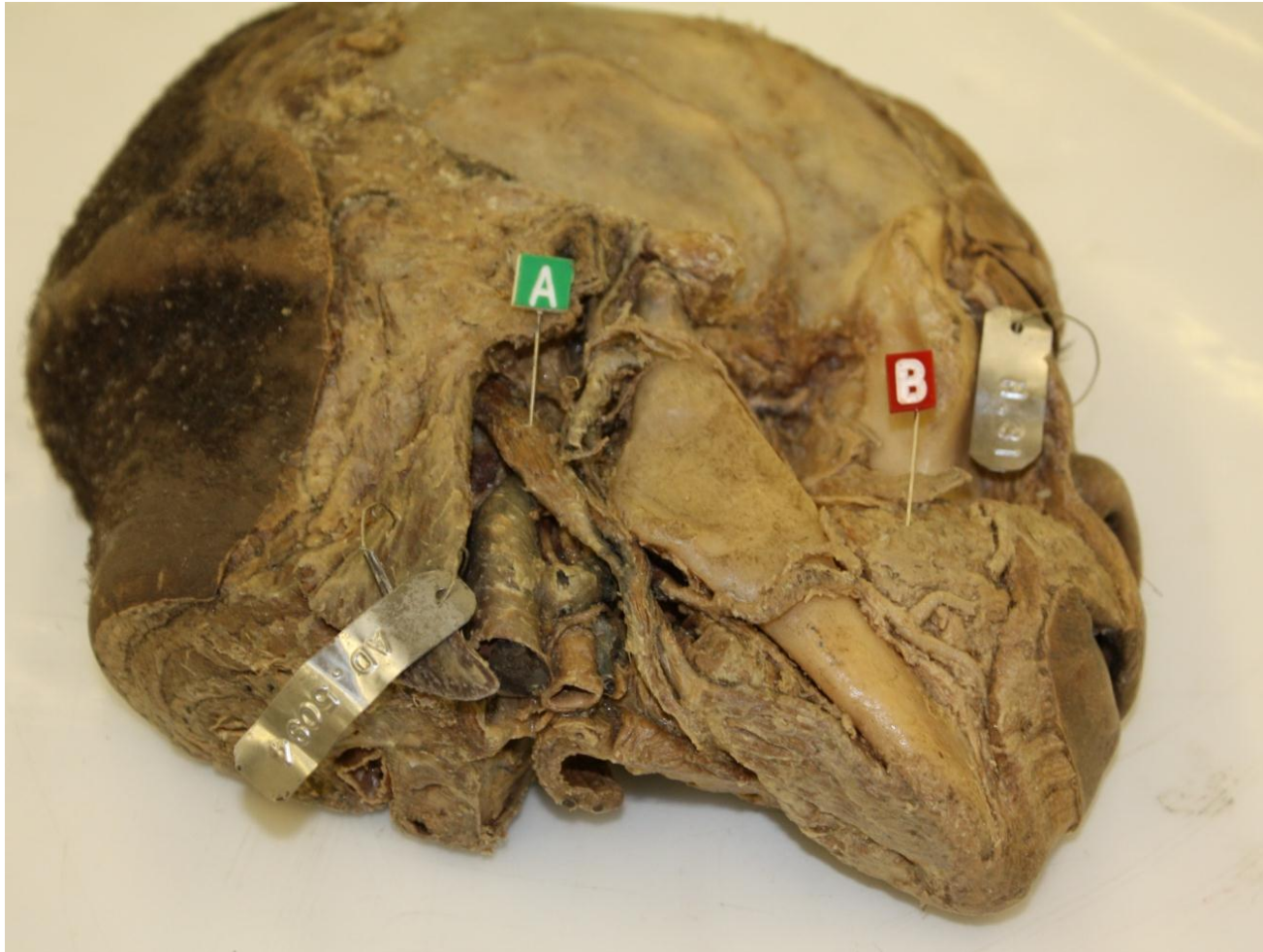


- A – IDENTIFY 'A' (Coronary sinus)**
- B – IDENTIFY 'B' (Posterior Interventricular artery)**



**A – NAME THE STRUCTURES THAT PASS THROUGH FORAMEN CIRCLED ‘BLUE’
(mental vessels & nerve)**

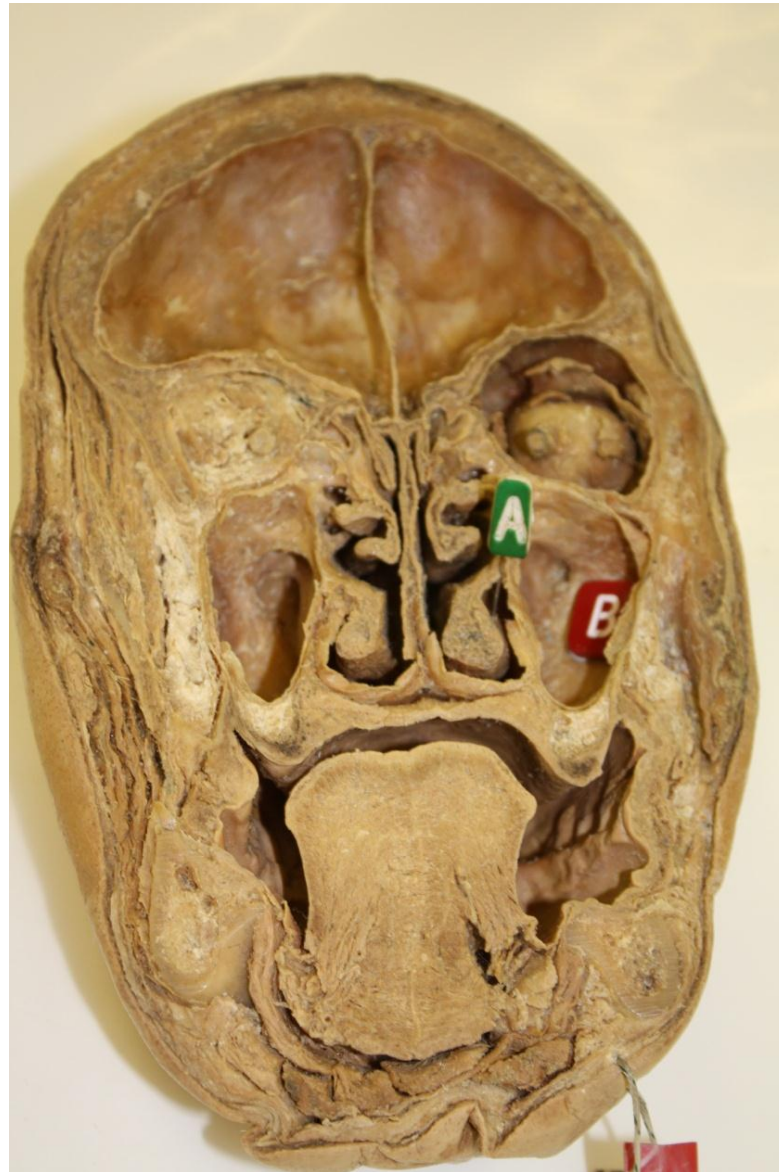
B – NAME THE PART OF THE BONE SHADED ‘YELLOW’ (Coronoid process)



A – IDENTIFY 'A' (BE SPECIFIC) [Posterior belly of Digastric]
B – WHICH CRANIAL NERVE IS EMBEDDED IN 'B' (Facial CN VII)

A – IDENTIFY ‘A’ (tip of pin) [Inferior nasal meatus]

B – IDENTIFY ‘B’ (Maxillary sinus)



A – IDENTIFY ‘A’
Opening of
pharyngotympanic/
Eustachian/Auditory tube

B – IDENTIFY ‘B’ (Trachea)



A – IDENTIFY 'A'
(Flexor carpi ulnaris)

B – NAME THE NERVE
SUPPLY TO 'A'
(Ulnar nerve)



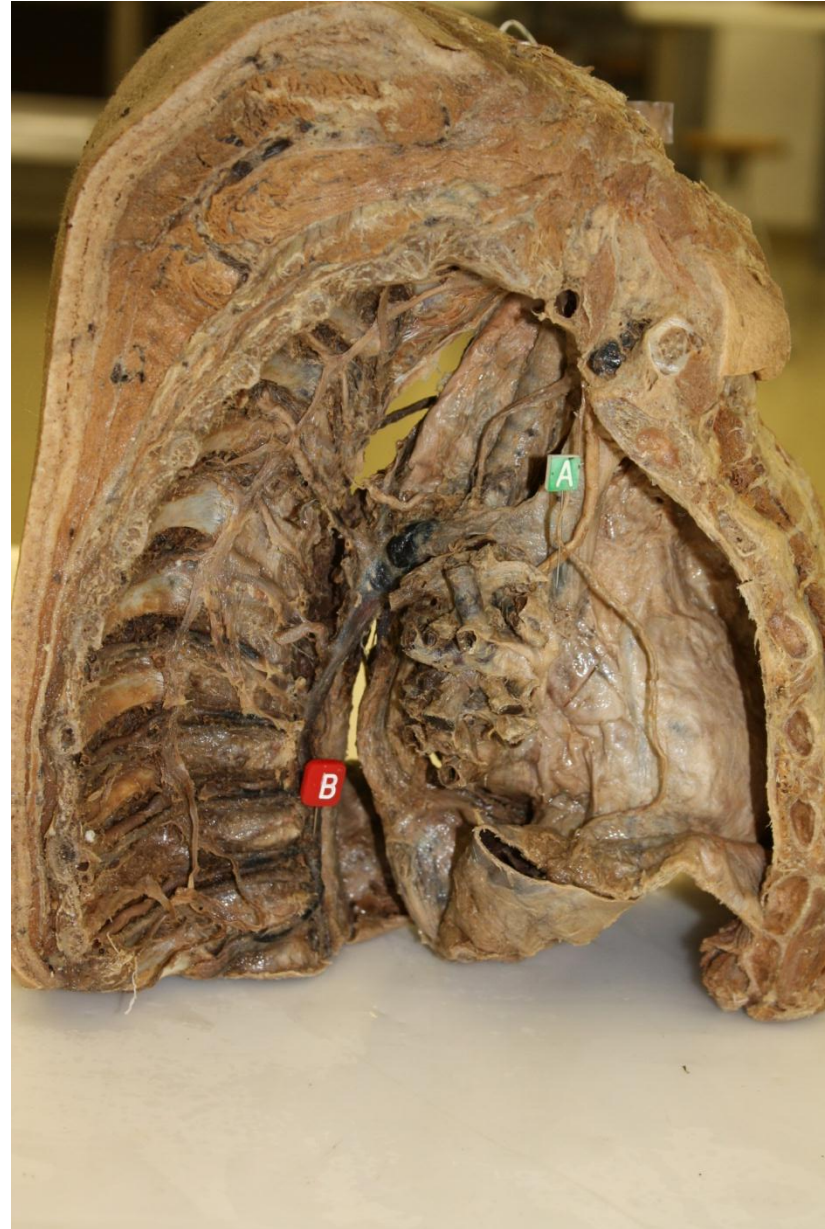


A - GIVE THE CUTANEOUS INNERVATION TO AREA PINNED 'A'
(Median Nerve)

B - GIVE THE CUTANEOUS INNERVATION TO AREA PINNED 'B'
(Ulnar nerve)

A – IDENTIFY ‘A’
(Phrenic Nerve)

B – IDENTIFY ‘B’
(Azygos vein)





A – IDENTIFY 'A' (Left atrium)

B – IDENTIFY 'B' (Thoracic/Descending Aorta)

A – WHERE ARE THESE 3 BONES FOUND (BE SPECIFIC)

[middle ear/tympanic cavity]

B – WHICH MUSCLE ACTS ON THE BONE LABELLED 'B'

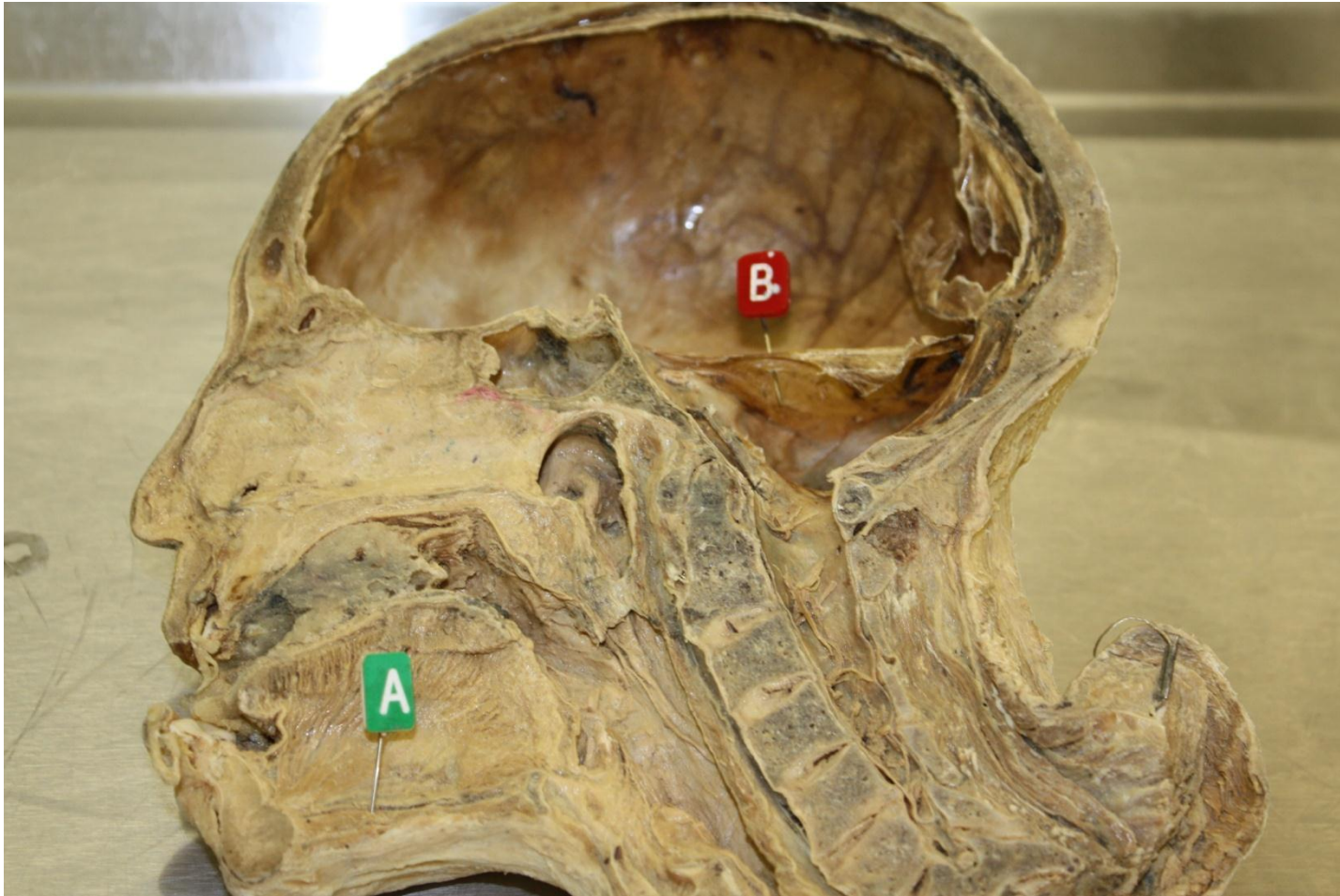
(Stapedius)



A - IDENTIFY 'A' (Be specific) [Geniohyoid]

B – IDENTIFY 'B' (Be specific)

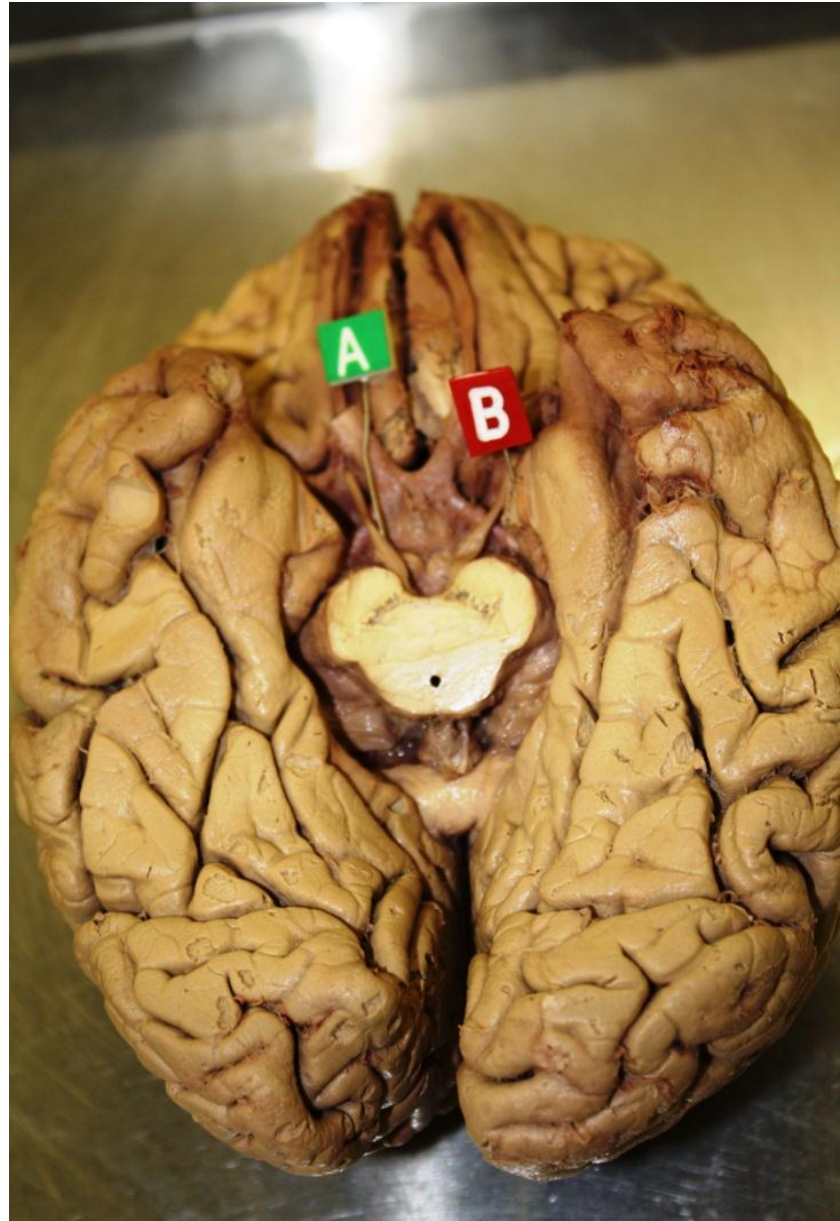
[Tentorium cerebelli]



**A – IDENTIFY STRUCTURE
'A' (TIP OF PIN)**

[Oculomotor Nerve]

B – IDENTIFY 'B' (Uncus)





A - IDENTIFY 'A' [Parieto-occipital sulcus]

B – IDENTIFY 'B' (Be specific) [Head of caudate Nucleus]